

Smart Plug-in Dimmer User Manual Wi-Fi 2.4GHz & Bluetooth

► Summary

- Smart Plug-in dimmer only supports 2.4 GHz Wi-Fi & Bluetooth network.
- Please ensure that the network is stable when using device.
- Smart Plug-in dimmer is compatible with “Smart Life” App , Amazon Alexa Google Assistant.

► Key Specification



Model	DIM400-SMART
Input Voltage	85V-265 VAC
Max Power	400W
Wireless Frequency	Wi-Fi 2.4GHz & Bluetooth
Wireless Standard	IEEE802.11 b/g/n
Support System	Android 4.1 and above or iOS 8.0 and above
Max Output	400W INC
	150W CFL
	150W LED

► **Indicator Light Status**

Light Color	Light Status	Switch Status
Red	Steady	Low power initial status
	Blink quickly	Ready for default Configuration
White	ON	Power ON
	OFF	Power OFF

► **Smart Plug Button Definition**

1. Press the ON/OFF button 3 times continuously, red indicator light blinks quickly [twice / 1s] to initiate default configuration mode.
2. Short press the ON/OFF button once to turn the light on or off.
3. Long press the ON/OFF button to increase the brightness of your light. Stepless dimming [1 % to 100% brightness completed in 5.5s]
4. When the brightness reaches 100%, long press the ON/OFF button will decrease the brightness. Stepless dimming [100% to 1% brightness completed in 5.5s]

► **Remote Controller Button Definition**

1. Short Press "ON" button to turn on the light
2. Short Press "OFF" button to turn off the light
3. Short Press "+" to increase 10% brightness
4. Long Press "+" to quickly increase brightness
5. Short Press "-" to decrease 10% brightness
6. Long Press "-" to quickly decrease brightness

► **Add Devices**

Step 1 : Download Smart Life App

Please scan the QR code below or search "Smart Life" in the APP Store or Google Play to download the App.



Step 2 : Registration or Log In

Once the App downloaded, enter the Log In/Sign Up interface. Tap “Sign Up” to create an account by entering your email address to get verification code and “Set password” to register successfully. Choose “Log In” if you already have a Smart Life account.

Step 3 : Connect with mobile phone

WIFI Mode Connect

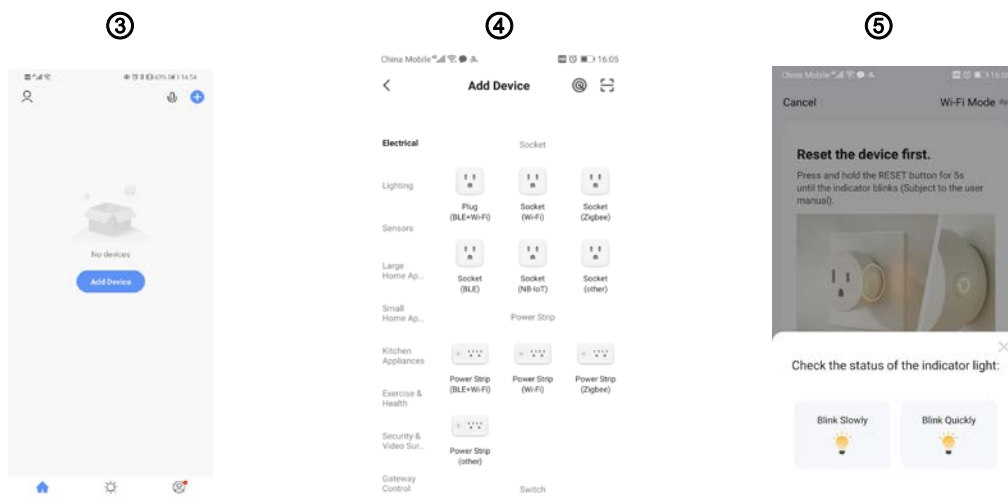
1. Turn on the smart phone and make sure your smart phone is connecting with your home Wi-Fi 2.4GHz successfully.
2. Quickly press the ON/OFF button for 3 times continually (Skip this step if the indicator automatically blink).
Make sure the red indicator is blinking fast [2/s].

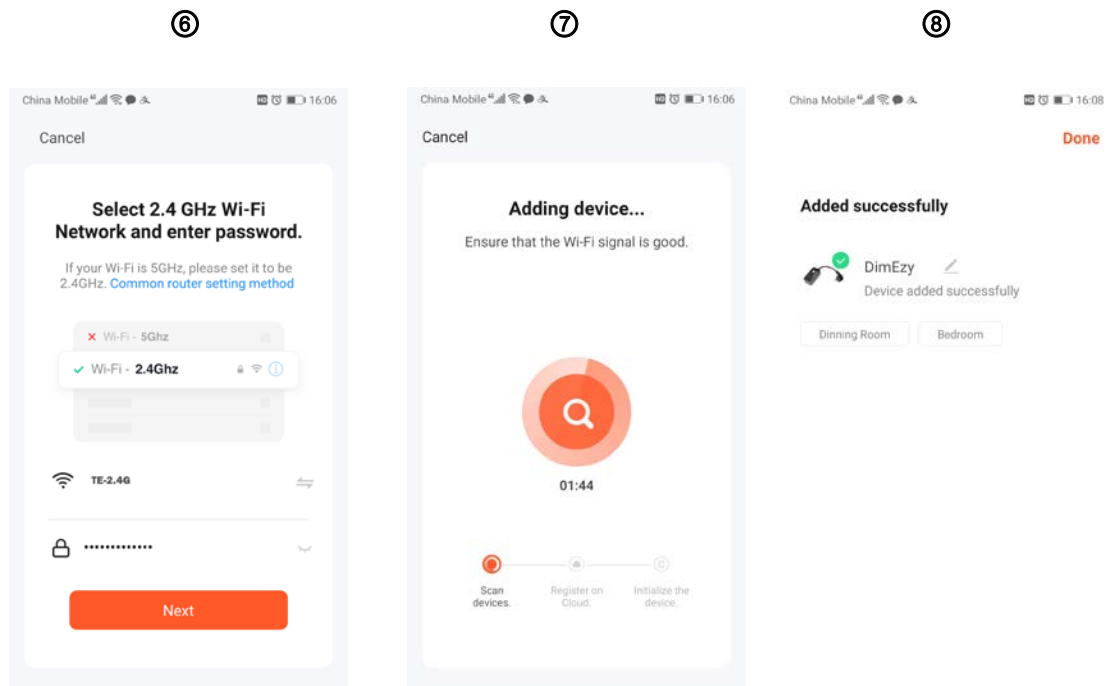
Note : The plug has been programmed indicator automatically blinking fast before it is out of factory. This step can be skipped unless the red light indicator is steady and does not get blinking itself.

3. Open the APP, click "+" and go to “Add Device”.
4. Choose “Electrical” - “ Plug (BLE+Wi-Fi)/Socket(Wifi) ”.
5. Click “Next” and Click “Blink Quickly”
6. Enter Wi-Fi password and click to “Next”
7. Adding Device...
8. Added Successfully. Click “ ” to Rename or just leave it as default name and Click “Done” to complete

Note: If the indicator light is red, it means that the device is not connected to the network. If the indicator light is white, it means the device is successfully connected to the network.

*** Please Disconnect/Disable Bluetooth in Wifi Mode!***





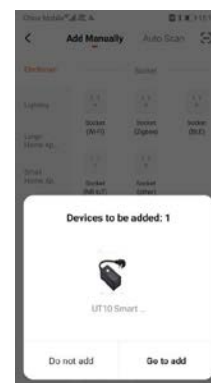
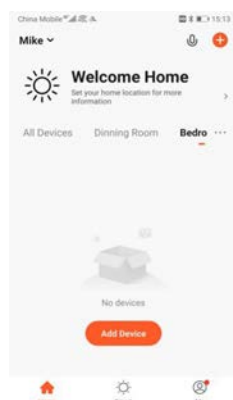
Bluetooth Added Manually

1. Turn on the Bluetooth & Wifi of smart phone and make sure your smart phone connecting with your home Wi-Fi 2.4GHz successfully.
2. Quickly press the ON/OFF button for 3 times continually (Skip this step if the indicator automatically blink). Make sure the red indicator is blinking fast [2/s].

Note : The plug has been programmed indicator automatically blinking fast before it is out of factory. This step can be skipped unless the red light indicator is steady and does not get blinking itself.


3. Open the APP, click "+" and "Devices" will be popped up automatically , then tap "go to add"

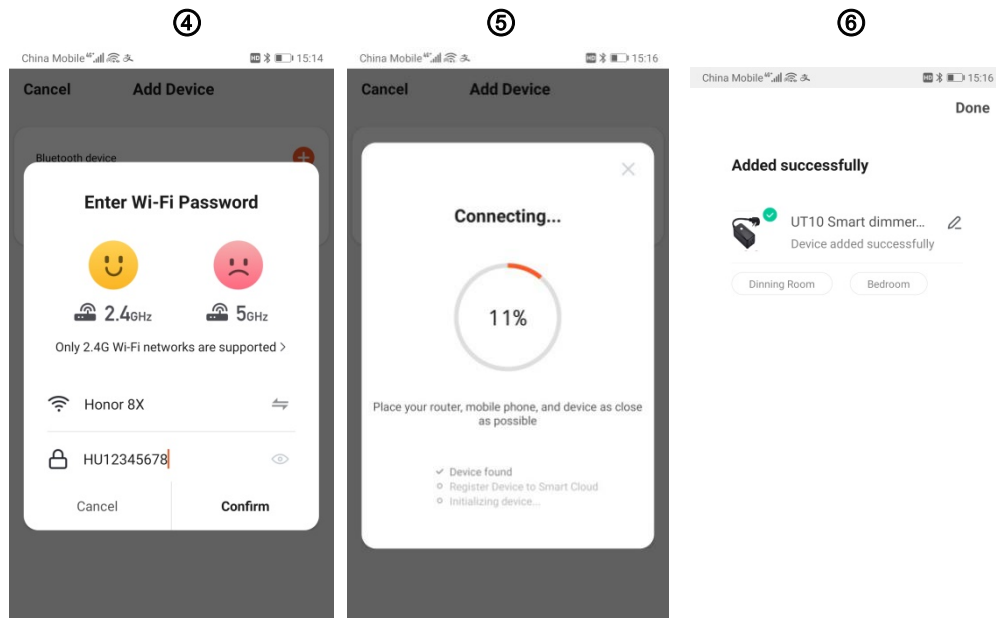
③



4. Choose your network and enter password.

5. Connecting...

6. Added Successfully. Click "  " to Rename or just leave it as default name and Click "Done" to complete



Note : If the indicator light is red, it means that the device is not connected to the network. If the indicator light is white, it means the device is successfully connected to the network.